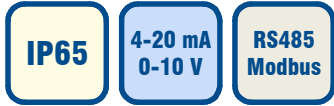


Carbon Monoxide Transmitter E2618-CO



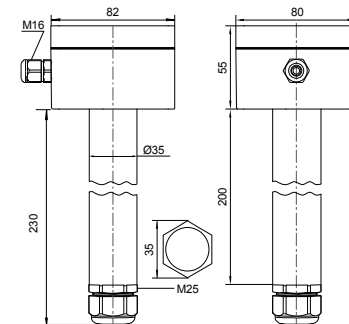
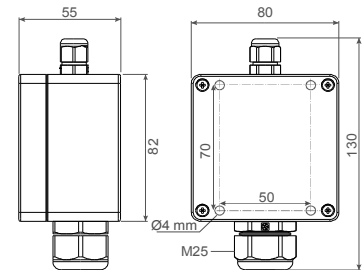
Features

- Accurate and stable measurement
- Wall mount or duct-mount robust enclosure
- Remote probe option
- Two analog outputs settable to 4-20 mA or 0-10 V
- RS485 Modbus RTU digital interface
- LCD indicator option

Specifications

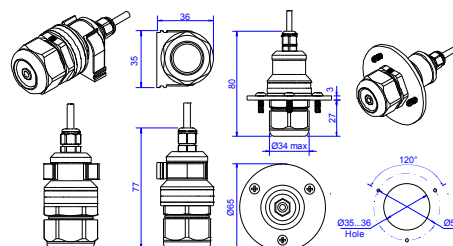
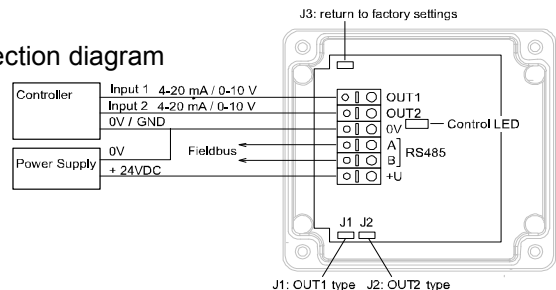
Calibration	Carbon Monoxide CO
Sensor type	Electrochemical cell
Sampling method	diffusion
Detection range	0...1000 ppm CO
Resolution	1 ppm CO
Signal update	every 1 second
Response time	~30 seconds
Maintenance interval	6 months
Sensor lifetime	> 6 years
Self-diagnostics	Full functionality check at start-up
Warm-up time	≤ 1 min
Power supply	11...30 VDC / 24 VAC
Power consumption	< 2 VA
Digital interface	RS485, Modbus RTU protocol
Analog outputs	2 × 4-20 mA / 0-10 V, user settable
Enclosure	Light-grey ABS plastic, protection class IP65
Dimensions	H82 × W80 × D55 mm
Remote sensor probe	Protection IP65, shielded cable default cable length 3.0 m
Operating environment	Industrial indoor and outdoor areas without aggressive gases
Operating conditions	-20...+50 °C, 15...95 %RH non ATEX rated areas
NOTE The sensor may exhibit sensitivity to acetylene, ethylene, hydrogen and nitric oxide	
LCD indicator option	
Operating temperature	0...+50 °C,
Display dimensions	72 × 36 mm
Number of digits	3.5 7-segment
Character height	14 mm
Other features	Backlight

Wall-mount version



Duct-mount version

Connection diagram



Remote probe

Ask for other versions or custom designed products

